

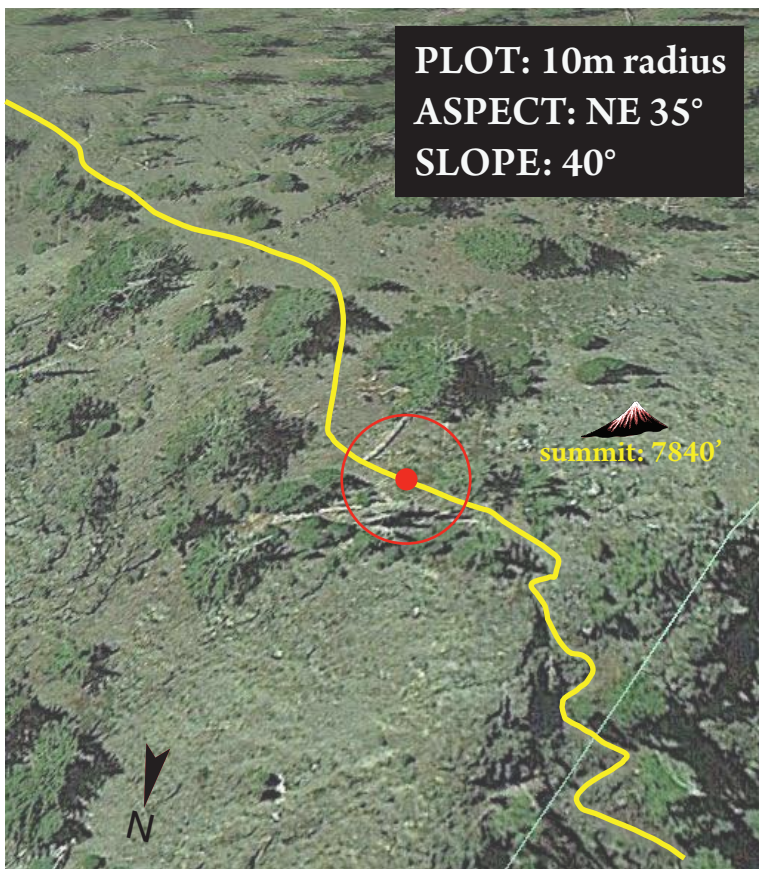
Trinity Alps Wilderness - Packers Peak

Elevation: 7,822' 41° 5'29.29"N 122°58'13.05"W



Finding the site: The high point of the entire Bigfoot Trail is found just below the old fire lookout site adjacent to some large bedrock outcrops. It is fairly obvious as long as you stay below the summit and along the trail. It is along the north-slope of the mountain, looking NE.

About the site: As of early summer 2016 the site is quite healthy, with ample conifer regeneration and extensive ground-cover of pinemat manzanita. There is some tree mortality in mountain hemlock and Shasta fir, totaling about 5% of the stand.



Rock: metamorphic

Fire evidence: no

Percent cover: 6% mature conifer, 7% regenerating conifer, 15% shrub, 6% herbaceous, 2% nonvascular

Height class: tree (10-15m), shrub (<0.5m), herbaceous (<0.5m)

Vegetation Alliance: *Arctostaphylos nevadensis*

Species within the plot

Trees:

- Foxtail pine (*Pinus balfouriana*)
- Shasta fir (*Abies magnifica* var. *shastensis*)
- Mountain hemlock (*Tsuga mertensiana*)

Shrubs:

- Pinemat manzanita (*A. nevadensis*)

Herbaceous:

- Trinity buckwheat (*Eriogonum alpinum*)
- Purple milkweed (*Asclepias cordifolia*)
- Creamy Flowered Stonecrop (*S. oregonense*)
- Lace lip fern (*Myriopteris gracillima*)
- Pine bluegrass (*Poa secunda*)

When you visit...

1. Take four pictures in the cardinal directions (N-E-S-W)
2. Write down observations...Do you see anything unusual? What birds did you see? Is there anything flowering? Do the conifers have fresh cones? Is there snow? Anything else?
3. Take pictures of anything else that catches your interest
4. Visit bfta.bigfoottrail.org/photo-monitoring
5. Complete the form with your observations and email your photos to monitoring@bfta.org

Data Collected June 11th, 2016

- Michael Kauffmann
- Jeff Morris
- Andrew Nofsinger
- Keith McCloghrie
- Philip Mitchell

Look for this cairn

